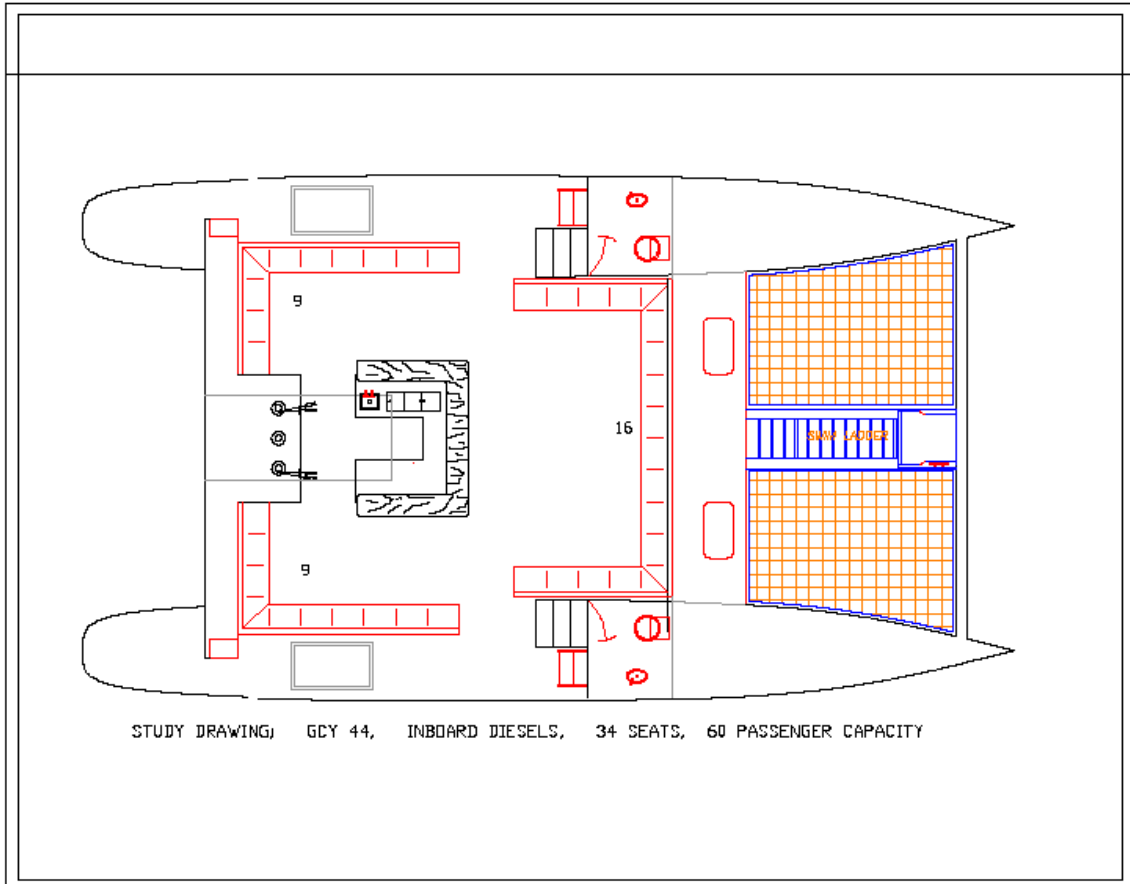


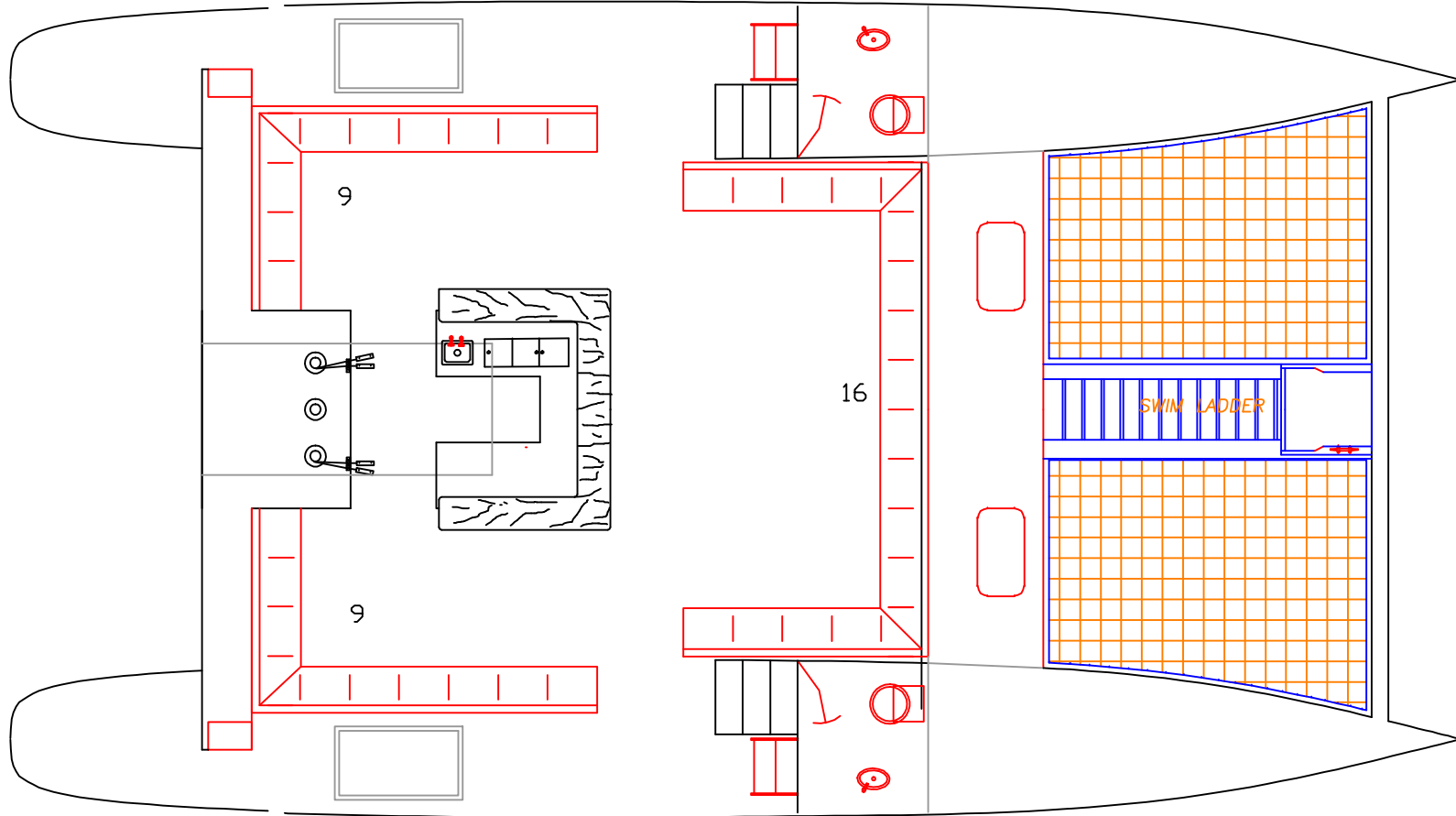
## GOLD COAST 44D DAY SAIL CATAMARAN CONCEPTUAL DESIGN



### SPECIFICATIONS

LOA	44'
BOA	24'
Light Displacement	15,000 lbs
Passengers	60
Propulsion	inboards
Sail Area	865 sq. ft.
Cruise Speed	9 knots
Full Speed	11 knots

### SCALE DRAWING BELOW.



STUDY DRAWING; GCY 44, INBOARD DIESELS, 34 SEATS, 60 PASSENGER CAPACITY